

Is My Child Too Sick for School? When to Stay Home

The list below gives school instructions not medical advice.
Please contact your health care provider with health concerns.



SYMPTOMS OF ILLNESS



THE STUDENT MAY RETURN AFTER...

(The list below indicates the shortest time to stay home.
A student may need to stay home longer for some illnesses.)

Fever: temperature of
100.4°F or greater



Fever-free for 24 hours without taking
fever-reducing medicine.

New **cough** illness **OR**
new **difficulty breathing**



Symptoms improving for 24 hours (no cough or cough
is well controlled and breathing comfortably). Urgent
medical care may be needed.

Headache with stiff
neck or with fever



Symptom-free **OR** with orders from doctor to school
nurse. Follow fever instructions if fever is present. Urgent
medical care may be needed.

Diarrhea: 2 loose or watery
stools in a day or unable to
control bowel movements



Symptom-free for 24 hours **OR** with orders from doctor
to school nurse.

Vomiting: 2 or more episodes
in 24 hours, or any 1 episode
that cannot be explained



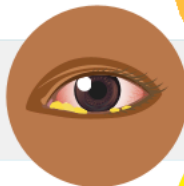
Symptom-free for 24 hours **OR** with orders from doctor
to school nurse.

Skin rash or **open sores**



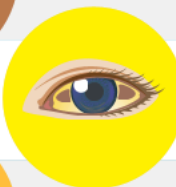
Symptom-free, which means rash is gone or sores are
dry or can be completely covered by a bandage **OR** with
orders from doctor to school nurse.

**Red eyes with eye
discharge:** yellow or brown
drainage **from the eyes**



Symptom-free, which means redness and discharge are
gone **OR** with orders from doctor to school nurse.

Jaundice: new yellow color
in eyes or skin



After the school has orders from doctor or local health
authority to school nurse.

**Acting differently without
a reason:** unusually sleepy,
grumpy or confused



Symptom-free, which means return to normal behavior
OR with orders from doctor to school nurse.

Major health event, like
an illness lasting 2 or more
weeks **OR** a hospital stay
**OR health condition requires
more care than school staff
can safely provide**



After the school has orders from doctor to school nurse
AND after measures are in place for student's safety.
Please work with the school staff to address special health
care needs so the student may attend safely.